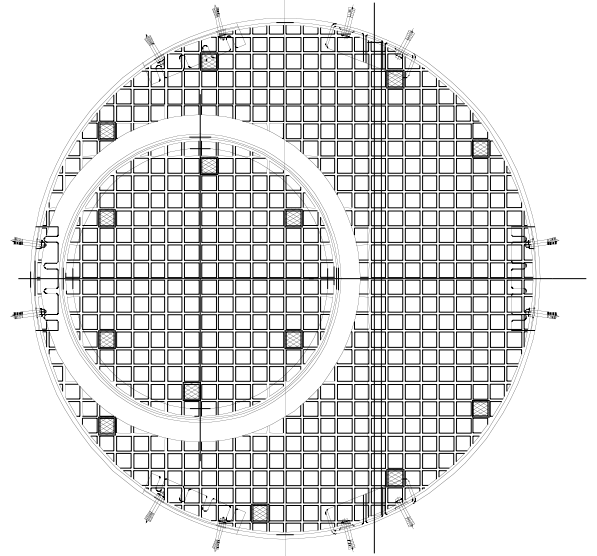


FRP Grating

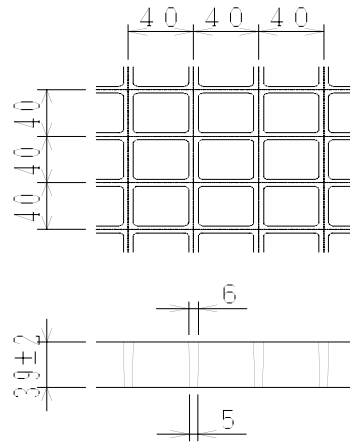
1. **Material:** Miyama FRP grating is manufactured by interlacing reinforcing glass fibre strands within a polyester resin. Gratings produced using this technique yield a product having 25-35% (by total weight) of fibreglass reinforcement.
2. **Dimensions:** Please refer to Miyama drawings for specific dimensions. Standard cross section of grating shown below.
3. **Inspection & Tests:** Please refer to Inspection & Testing sheets, or load deflection table shown below
4. **Characteristics:**
 - 4.1 Excellent corrosion resistant properties.
 - 4.2 Remarkable strength to weight ratio.
 - 4.3 Requires no coating to resist attack from the chemical & natural environment.
 - 4.4 Impact absorbing.
 - 4.5 Maintenance free.
 - 4.7 Lowest life cycle cost.
 - 4.8 Low conductivity both thermally and electrically.
 - 4.9 Non-magnetic properties (ideal for electrical applications).
 - 4.10 Low installation cost.
5. **Areas of Application:**
 - Shopping centers, footpaths and walkways.
 - Sewerage treatment plants
 - Water purification plants
 - Saltwater areas
 - Food processing plants
 - Chemical plants
 - Electrical product manufacturing plants
 - Indoor & outdoor facilities.



6.

Product Applications

- Flooring
- Trench covers
- Pits covers
- Platforms
- Elevated walkways
- Stair treads
- Drainage grating
- Grilles and screens
- Battery and wash racks
- Machinery guards



7.

Load Deflection Data

Deflection (mm)

Grating Span (mm)	100kg	200kg	300kg	400kg	500kg	600kg	700kg
	700	0.3	0.5	0.8	1.1	1.3	1.6
800	0.5	1.0	1.6	2.1	2.6	3.1	3.7
900	0.8	1.6	2.4	3.2	3.9		
1000	1.2	2.3	3.4	4.5			
1100	1.7	3.3	4.8				
1200	2.5	4.8					
1300	3.4						

Sheet Size – 3007 x 1007 x 39mm
 3005 x 1005 x 25mm